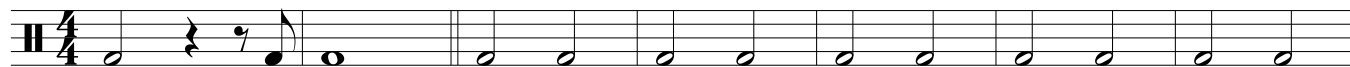


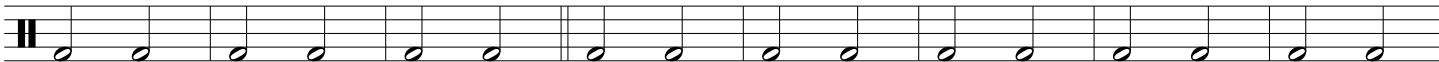
# Just a Closer Walk With Thee

Traditional  
Arr. Mark Braud

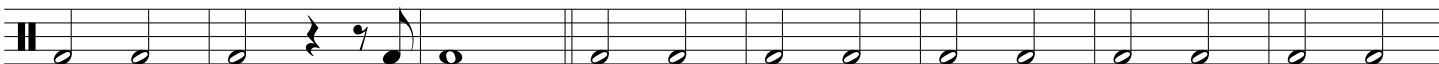
Dirge ♩ = 60



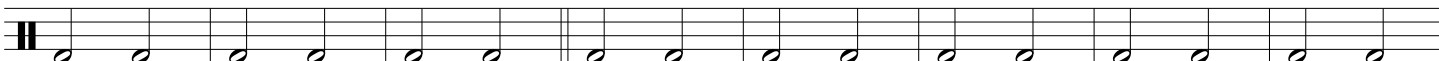
8



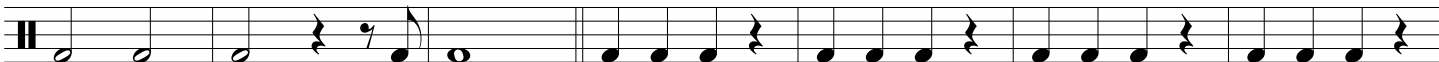
16



24



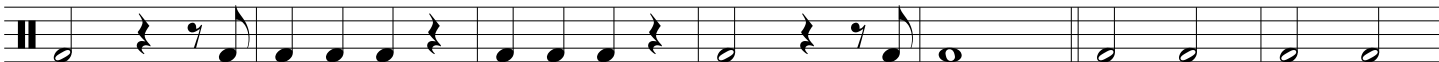
32



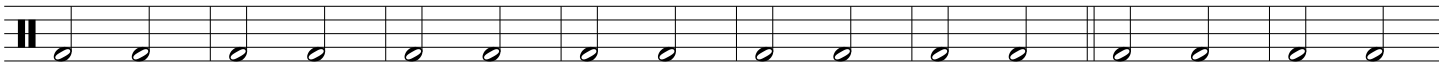
39



46



53



Just a Closer Walk With Thee

61

*rit.*

A single musical staff containing the final measure of the piece. The staff begins with a double bar line and a key signature of one flat (B-flat). The melody consists of a sequence of quarter notes: B-flat, A, G, F, E, D, C, B-flat. The final note is a B-flat quarter note with a fermata above it. The staff ends with a double bar line and a key signature change to one sharp (F#).